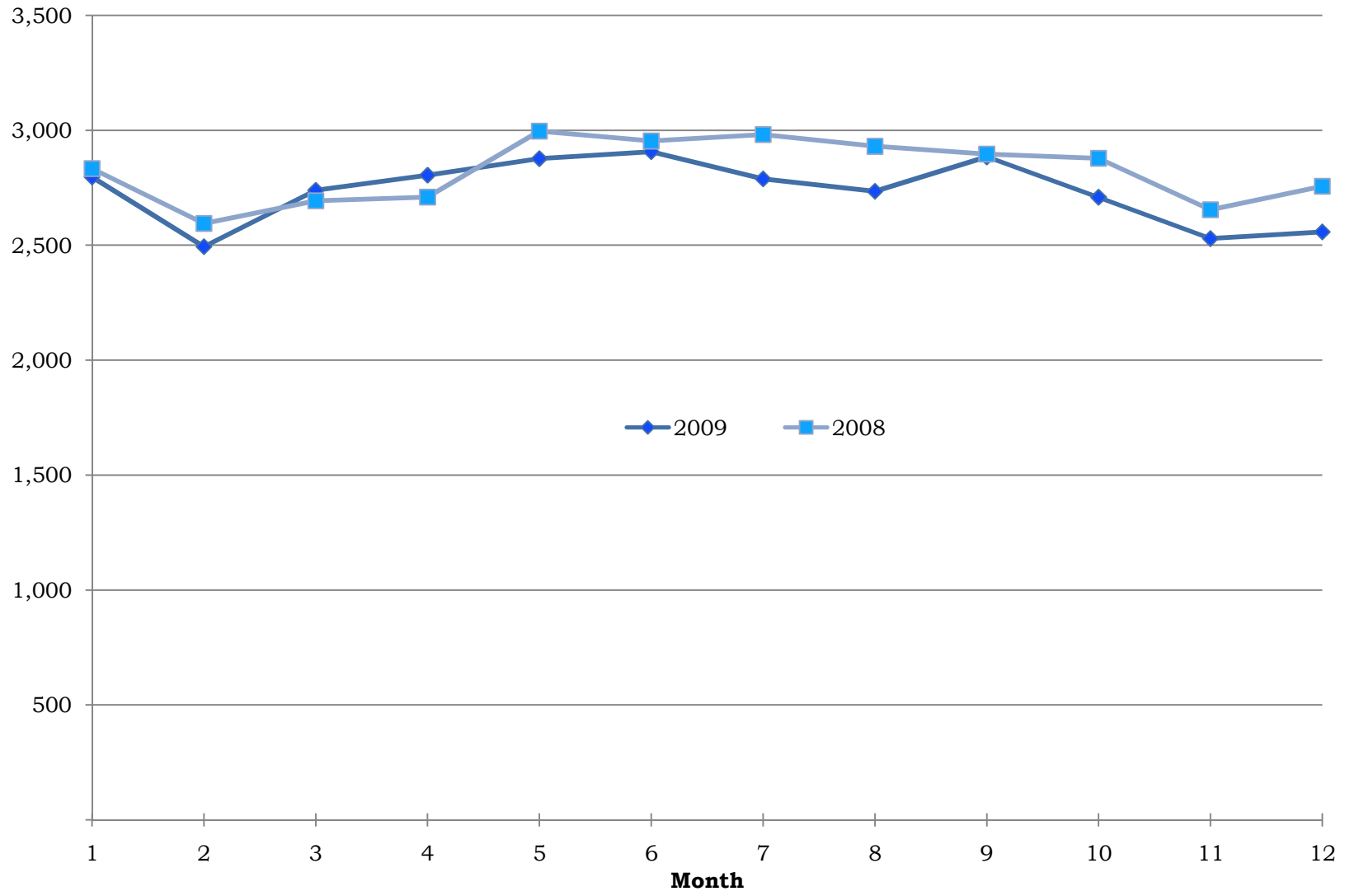
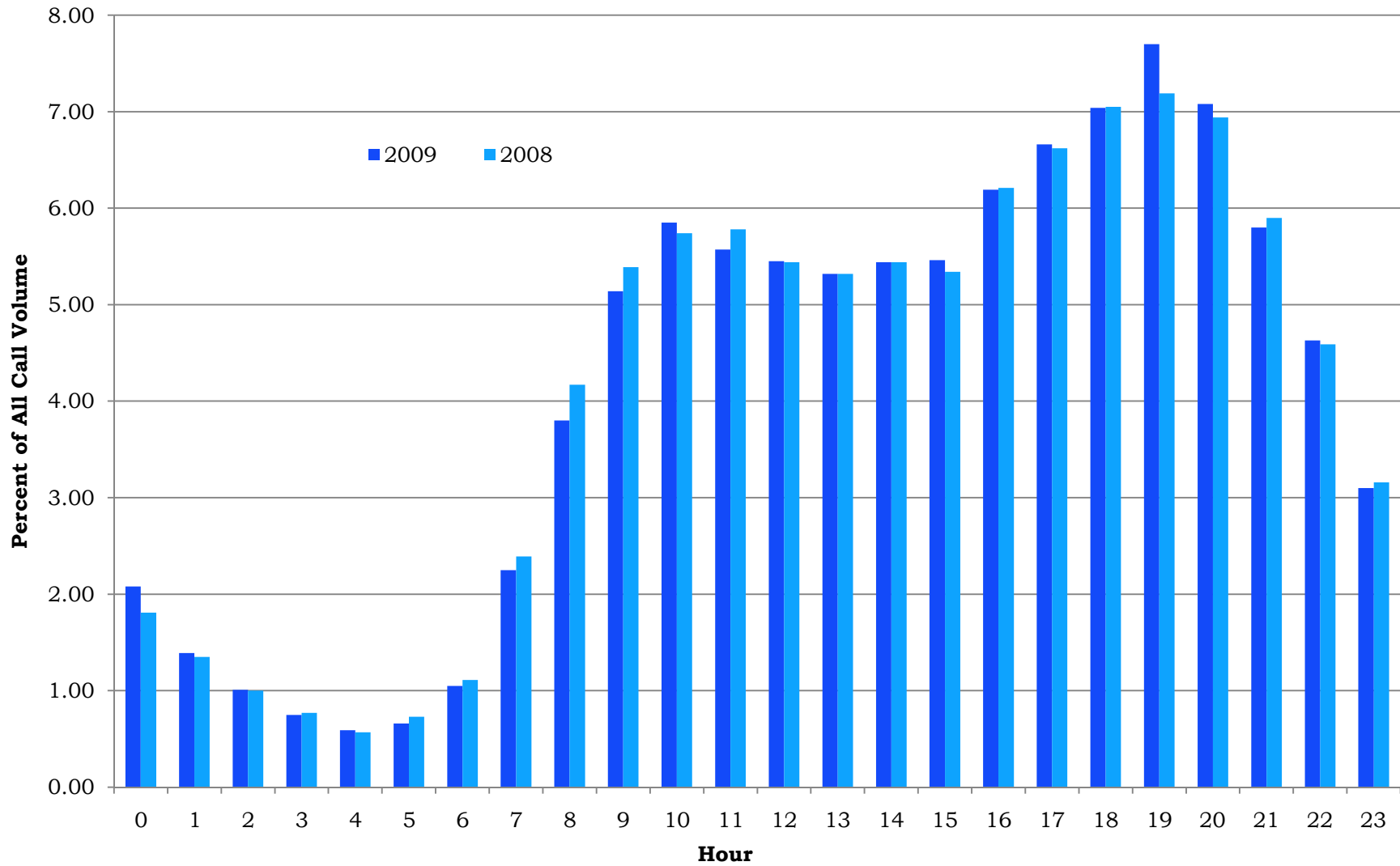


### CTPC Monthly Call Volume by Year



### Hourly Distribution of Total Call Volume



Connecticut Poison Center Biennial Report on Poisoning Statistics for Connecticut

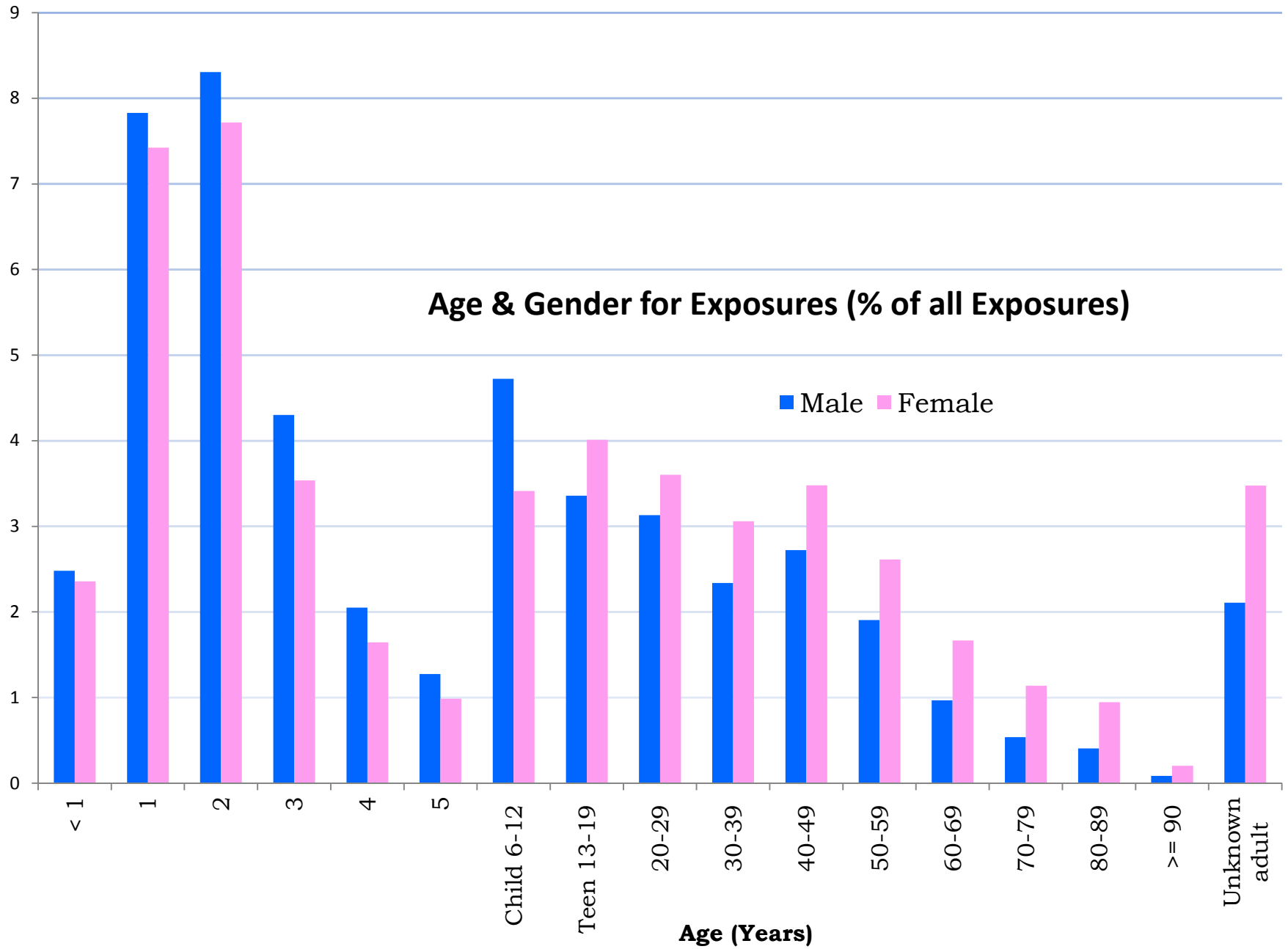
<u>Source of Exposure Calls</u>		
<u>Connecticut County</u>	<u>2008</u>	<u>2009</u>
Fairfield	6421	6,218
Hartford	7502	7,346
Litchfield	1454	1,422
Middlesex	1289	1,228
New Haven	6269	6,008
New London	2256	2,260
Tolland	1086	965
Windham	1183	993
<u>Other</u>		
Other US State/Territory	470	693
Overseas Military Base	50	51
Other Country	254	350
Unspecified	11	4
TOTAL	28,245	27,537

<u>Where Exposures Occurred</u>		
<u>Location</u>	<u>2008</u>	<u>2009</u>
Own residence	23,046	22,240
Other residence	1,132	1,206
Workplace	690	627
Health care facility	123	114
School	1,167	963
Restaurant / food service	100	89
Public area	507	451
Other	409	442
Unknown	286	307

## Biennial Report on Poisoning Statistics for Connecticut

### Reason for Exposures (2008 - 2009 Data Combined)

<u>Unintentional</u>	%
General	55.27
Environmental	4.02
Occupational	1.89
Therapeutic error	11.74
Misuse	7.02
Bite / sting	1.05
Food poisoning	1.91
Unknown	0.04
<u>Intentional</u>	
Suspected suicide	8.05
Misuse	2.19
Abuse	1.84
Unknown	0.80
<u>Other</u>	
Contamination / tampering	0.57
Malicious	0.39
Withdrawal	0.06
<u>Adverse reaction</u>	
Drug	1.95
Food	0.28
Other	0.48
<u>Unknown reason</u>	0.49



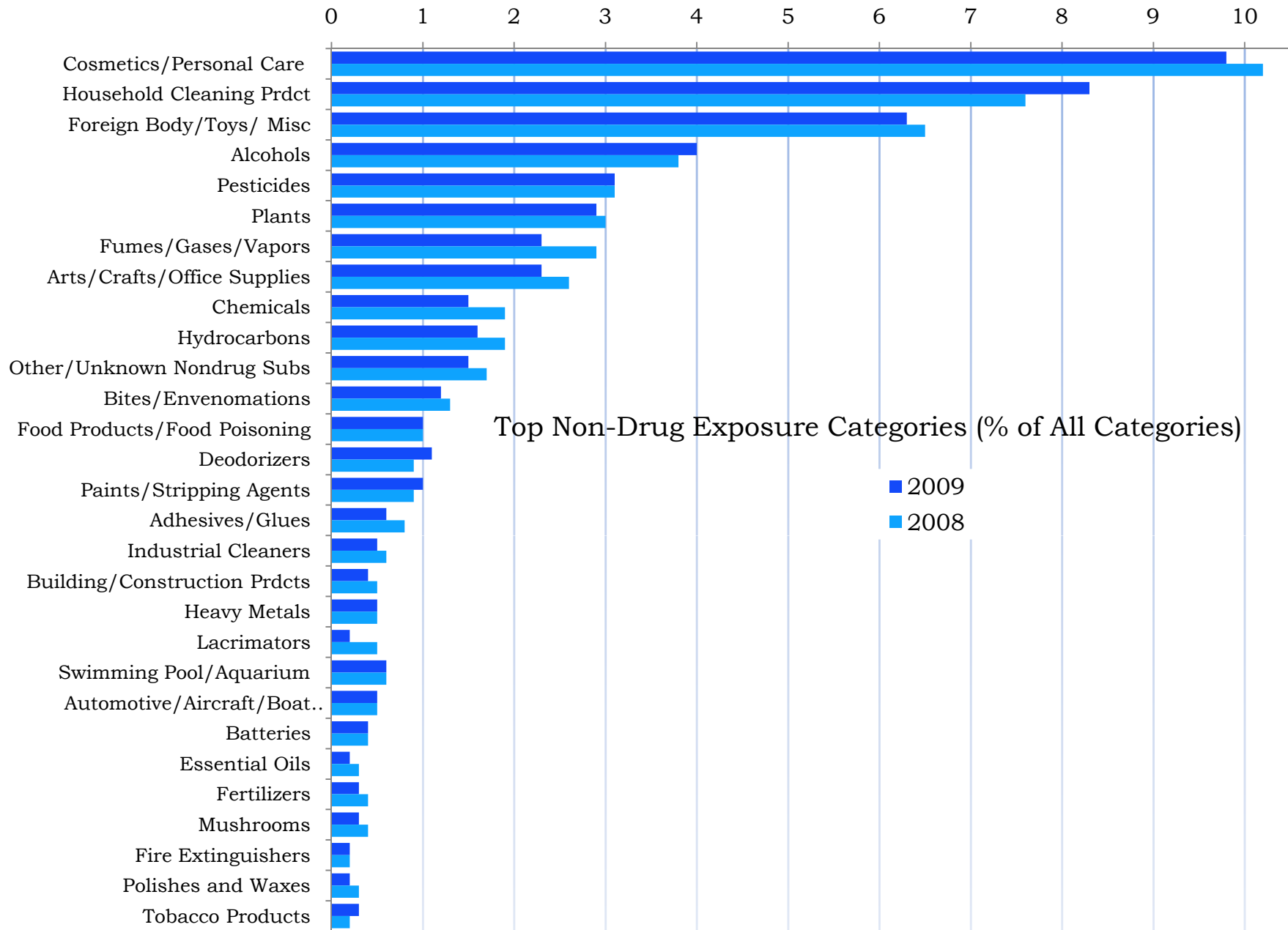
## Where Exposures are Managed

(2008 - 2009 Data Combined)

	<u>%</u>
On site / not in a health care facility	71
In a healthcare facility	24
Refused referral	0.9
Other	4.3

	2009	2008
<u>Medical Outcome for Exposures</u>	<u>%</u>	<u>%</u>
No effect	13	13
Minor effect	13	14
Moderate effect	5	6
Major effect	1	1
Death		
No follow-up, nontoxic	26	28
No follow-up, minimal toxicity	36	32
No follow-up, potentially toxic	3	3
Unrelated effect	3	4

<u>Health Care Facility Initiated Calls</u>	<u>2008</u>	<u>2009</u>
Bridgeport Hospital	141	111
St. Vincent's Hospital	218	175
Bristol Hospital	163	174
CT Children's Medical Center	219	211
Danbury Hospital	173	200
Griffin Hospital	128	113
John Dempsey Hospital	114	97
Greenwich Hospital	130	130
Hartford Hospital	365	288
St. Francis Hospital	101	50
Manchester Memorial Hospital	123	99
Midstate Medical Center	134	136
Middlesex Memorial Hospital	77	107
Milford Hospital	51	18
Hospital of Central CT New Britain	165	176
Yale-New Haven Hospital	321	342
St. Raphael's Hospital	93	89
Lawrence and Memorial Hospital	182	247
New Milford Hospital	37	20
Norwalk Hospital	101	140
Backus (William) Hospital	99	114
Day Kimball Hospital	157	153
Rockville General Hospital	57	60
Sharon Hospital	31	38
Hospital of Central CT Bradley Memorial	45	61
Johnson Memorial Hospital	80	89
Stamford Hospital	169	203
Charlotte Hungerford Hospital	48	62
St. Mary's Hospital	83	91
Waterbury Hospital	176	164
Windham Hospital	123	114



Top Non-Drug Exposure Substances (% of All Substances)

